

30<sup>th</sup> March 2021

Ryan Carroll  
Project Manager  
Suite 2 Level 8  
60 Pitt Street Sydney  
0431 972 031

## **OAKHILL COLLEGE INNOVATION HUB AND HILLTOP PRECINCT 423/513 OLD NORTHERN RD, CASTLE HILL NSW 2154: LANDSCAPE DESIGN STATEMENT**

The following landscape design statement has been prepared in response to the following feedback from the **SNPP (Sydney North Planning Panel) matters for clarification item 6.**

Following plans prepared by Urbis dated below

- P20196 Landscape Concept Plan Urbis December 2020
- P20196 Planting Plan Urbis December 2020

*“Revised Landscape Plan along the northern boundary of the site to reduce the width of the access way, increase the width of the garden bed, increase canopy tree planting and ensure maximum screening of the built form”.*

The following plans have been updated to address comments – **attached as appendices**

- P0020196\_L001 LEGEND & PLANT SCHEDULE- C
- P0020196\_L501 PLANTING PLAN- C

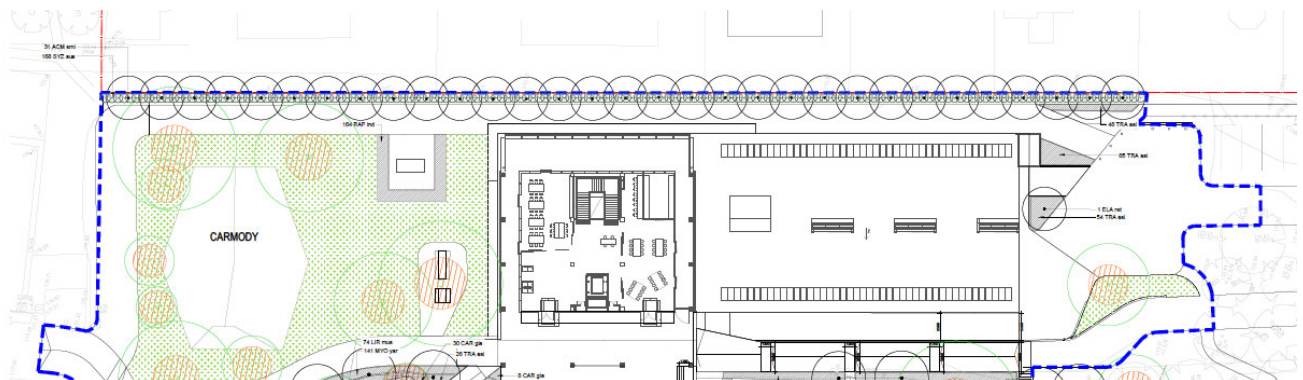


Fig 1- P0020196\_L501 PLANTING PLAN- C

In addition to the previous DA submission which included a raised planter to the building edge. The proposed planting plan has been updated to provide additional screening to the northern boundary to increase canopy tree planting and ensure maximum screening of the built form.

The 1.8m existing timber slat fence will be retained with an additional hedging of 168 *Syzygium australe* 'Lilly Pilly Select Form' in 300mm pot sizes maintained at approx 3m in height.

In addition, 31 x *Acmena smithii* trees at 100Ltr in size have been proposed at 4-meter spacings to reinforce additional screening to the northern boundary to increase canopy tree planting and ensure maximum screening of the built form. The *Acmena smithii* trees will growing to an estimated height of 10-12m and a spread of 4m. A 1500mm deep soil area has been proposed to ensure optimal growing conditions



Fig 2- *Syzygium australe* 'Lilly Pilly Select Form'



*Fig 3- Acmena smithii trees*

*Please note an existing 3m high Photinia hedge and Cupressus trees [Pencil pines] exists on the neighbouring boundary edge – shown below*





*Fig 4- existing boundary interface*

*Charlie Robinson*

Charlie Robinson: Senior Landscape Architect  
RLA #5898 Associate Director  
[crobinson@urbis.com.au](mailto:crobinson@urbis.com.au)



LEGEND  
REFER LANDSCAPE SPECIFICATION FOR DETAILS & FINISHES

GENERAL

	SITE BOUNDARY LINE
	EXTENT OF WORKS
	EXISTING TREES TO BE RETAINED TREE PROTECTION ZONE (TPZ)
	STRUCTURAL ROOT ZONE (SRZ)
	PROPOSED TREES
	EXISTING TREES TO BE REMOVED
	STORMWATER INLET BY CIVIL ENGINEER BY CIVIL ENGINEER
	BESPOKE SHADE CANOPY STRUCTURE TO BE DETAILED BY CONTRACTOR REFER TO LANDSCAPE SPECIFICATION
	STRATA VAULT SYSTEM BELOW GROUND

GRADING

	EXISTING LEVEL
	FINISHED FLOOR LEVEL
	TOP OF WALL LEVEL
	EXISTING CONTOURS
	PROPOSED CONTOURS BY CIVIL ENGINEER

PAVEMENT TYPES

	PA01 PORPHYRY SETTS REFER TO LANDSCAPE SPECIFICATION
	PA02 PRECAST CONCRETE PAVER REFER TO LANDSCAPE SPECIFICATION
	PA03 EXPOSED AGGREGATE CONCRETE REFER TO LANDSCAPE SPECIFICATION
	PA04 EXPOSED AGGREGATE CONCRETE REFER TO LANDSCAPE SPECIFICATION
	PA05 EXPOSED AGGREGATE CONCRETE REFER TO LANDSCAPE SPECIFICATION
	PA06 TIMBER DECKING REFER TO LANDSCAPE SPECIFICATION
	EXISTING BRICK COURSE TO BE RETAINED AND PROTECTED REFER TO LANDSCAPE SPECIFICATION
	PROPOSED ASPHALT SURFACE TO BE RETAINED AND PROTECTED REFER TO CIVIL ENGINEERS
	TA01 TACTILE INDICATOR PAVERS REFER TO LANDSCAPE SPECIFICATION

PLANTING TYPES

	TU01 TURF REFER TO LANDSCAPE SPECIFICATION
	GA01 SHRUB PLANTING REFER TO LANDSCAPE SPECIFICATION

FURNITURE

	FU01 LINEAR BENCHES REFER TO LANDSCAPE SPECIFICATION
	FU2 CIRCULAR SEATING BELOW TREES REFER TO LANDSCAPE SPECIFICATION
	FU3 CURVED SEATING REFER TO LANDSCAPE SPECIFICATION
	FU4 BENCH SEATING IN PLANTER REFER TO LANDSCAPE SPECIFICATION
	FU5 TABLE TENNIS REFER TO LANDSCAPE SPECIFICATION
	FU6 PROPOSED FLAG POLE REFER TO LANDSCAPE SPECIFICATION
	FU7 PROPOSED BIN REFER TO LANDSCAPE SPECIFICATION
	FU8 PROPOSED CHILLED DRINKING FOUNTAIN REFER TO LANDSCAPE SPECIFICATION
	CHURCH STATUE TO BE RETAINED AND RELOCATED LOCATION TO BE CONFIRMED

WALLS AND EDGES

	WA01 CONCRETE RETAINING WALL REFER TO LANDSCAPE SPECIFICATION
	WA02 FEATURE WALL REFER TO LANDSCAPE SPECIFICATION
	HA01 HANDRAIL REFER TO LANDSCAPE SPECIFICATION
	ED01 CONCRETE EDGE REFER TO LANDSCAPE SPECIFICATION
	ED02 STEEL EDGE REFER TO LANDSCAPE SPECIFICATION

NOTE:

- THE PLAN MUST BE READ IN CONJUNCTION WITH THE SPECIFICATION WHICH ALSO CONTAINS THE SCHEDULE OF LANDSCAPE WORKS AND PLANT SCHEDULE
- ALL DRAWINGS ARE TO BE READ IN CONJUNCTION WITH THE ASSOCIATED DRAWINGS BY OTHER CONSULTANTS E.G. ENGINEERS.
- DO NOT DAMAGE ANY ROOTS GREATER THAN 15MM DIAMETER OF RETAINED TREES / PALMS
- REFER TO THE TREE PROTECTION PLAN (AND POTENTIAL TREE ASSESSMENT REPORT) FOR DETAILS OF EXISTING TREES TO BE REMOVED, RETAINED OR TRANSPLANTED.
- REMOVAL OR DISTURBANCE OF VEGETATION AND TOP SOIL MUST BE CONFINED TO WITHIN THREE METRES OF THE APPROVED NEW BUILDING EXCEPT WHERE LEVELS ARE TO BE ALTERED AND NEW LANDSCAPE FINISHES INSTALLED, GAIN DIRECTION FROM THE LANDSCAPE ARCHITECT REGARDING POTENTIAL VEGETATION AND TOP SOIL IMPLICATIONS.

GROUND FLOOR PLANT SCHEDULE

TREES

KEY	BOTANIC NAME	COMMON NAME	SIZE	POT	SPACING	QTY.
ACM smi	Acmena smithii	Lilly Pilly	12m x 6m	100L	AS SHOWN	31
CUP ana	Cupaniopsis anacardioides	Tuckeroo	15m x 10m	200L	AS SHOWN	4
ELA ret	Elaeocarpus reticulatus	Blueberry Ash	9m x 4m	200L	AS SHOWN	11
LAG ind	Lagerstroemia indica	Crepe Myrtle	6-8m x 5m	200L	AS SHOWN	14
LOP con	Lophostemon confertus	Brush Box	15m x 10m	800L	AS SHOWN	6
MAG gra	Magnolia grandiflora 'Little Gem'	Magnolia	12m x 8m	200L	AS SHOWN	14
QUE pal	Quercus palustris	Pin Oak	15m x 8m	800L	AS SHOWN	1
ULM par	Ulmus parvifolia	Chinese Elm	6-8m x 5m	400L	AS SHOWN	9
					TOTAL	90

SHRUBS

KEY	BOTANIC NAME	COMMON NAME	SIZE	POT	SPACING	QTY.
GAR au	Gardenia augusta 'Florida'	Gardenia Florida	1m x 1m	200mm	450 mm	384
HAR vio	Hardenbergia violacea	Native sarsaparilla	2m x 1.5m	200mm	450 mm	118
MUR pan	Murraya paniculata	Orange Jasmine	3m x 3m	200mm	450 mm	583
PHI xan	Philodendron xanadu	Winterbourn	0.5m x 0.5m	200mm	450 mm	797
RAP ind	Raphiolepis indica 'Oriental Pearl'	Indian Hawthorn	1m x 1m	200mm	450 mm	429
SYZ aus	Syzygium australe 'Select Form'	Lilly Pilly 'Select Form'	3m x 1.5m	300mm	450 mm	168
WES fru	Westringia fruticosa 'Mundi'	Coastal Rosemary	0.5m x 1.5m	200mm	450 mm	162
XAN arb	Xanthorrhoea arborea	Grass-tree	1m x 1.5m	200mm	500 mm	52
					TOTAL	2525

FERNERY MIX

KEY	BOTANIC NAME	COMMON NAME	SIZE	POT	SPACING	QTY.
ADI ped	Adiantum pedatum	Maidenhair Fern		300mm	600 mm	102
ASP ant	Asplenium antiquum	Birds Nest Fern		300mm	600 mm	56
BLE sil	Blechnum Silver	Silver Lady fern		300mm	600 mm	102
BLE pen	Blechnum pennamarina	Alpine Water Fern		300mm	600 mm	102
DOO asp	Doodia aspera	Prickly Rasp Fern		300mm	600 mm	102
					TOTAL	464

GROUNDCOVERS

KEY	BOTANIC NAME	COMMON NAME	SIZE	POT	SPACING	QTY.
BAN bir	Banksia 'Birthday Candles'	Prostrate Banksia	0.6m x 1.2m	200mm	450 mm	183
BRA mul	Brachyscome multifida	Cut-leaf Daisy	0.5m x 1m	200mm	450 mm	194
CAL lit	Callistemon 'Little John'	Bottlebrush	1m x 1m	200mm	450 mm	317
CAR gla	Carpobrotus glaucescens	Pigface	0.3m x 2m	200mm	450 mm	441
CLI min	Clivia miniata	Kaffir Lily	0.5m x 0.5m	200mm	450 mm	226
DIA cae	Dianella caerulea	Blue Flax Lily	1m x 0.5m	200mm	450 mm	272
JUN tax	Juniperus taxifolia	Creeping Juniper	0.2m x 1m	200mm	450 mm	1037
LIR mus	Liriope muscari	Big Blue Lily Turf	0.5m x 0.5m	200mm	450 mm	475
MYO yar	Myoporum parvifolium 'Yareena'	Creeping Boobialla	0.2m x 1m	200mm	450 mm	1362
TRA asi	Trachelospermum asiaticum	Asiatic Jasmine	0.5m x 0.5m	200mm	450 mm	944
					TOTAL	5451

NOTE:

PLANTING MIXES TO BE SAMPLE LAID IN POTS AND SAMPLE AREA APPROVED - PRIOR TO INSTALLATION  
IRRIGATION TO BE SUPPLIED AND INSTALLED BY A SPECIALIST IRRIGATION CONSULTANT AND CONTRACTOR

INSTALL SIZES ARE BASED ON SUITABLE PROCUREMENT TIMES & ARE ESTIMATE ONLY  
THE CONTRACTOR SHALL COMPLETE ALL PLANTING WORKS IN ACCORDANCE WITH THE RELEVANT STATUTORY REQUIREMENTS, STANDARDS, CODES AND GUIDELINES

INCLUDING BUT NOT LIMITED TO:  
· NATSPEC GUIDE: SPECIFYING TREES -  
A GUIDE TO ASSESSMENT OF TREE QUALITY  
· AS 1289 - METHODS OF TESTING SOILS  
FOR ENGINEERING PURPOSES  
· AS 4419 - 2003 SOILS FOR LANDSCAPING AND GARDEN USE  
· AS2303 - TREE STOCK FOR LANDSCAPING USE  
· WORKCOVER AUTHORITY OF NSW  
CODE OF PRACTICE - MOVING PLANT ON CONSTRUCTION SITES  
· WORKCOVER CODE OF PRACTICE FOR THE AMENITY TREE INDUSTRY -1998

DISCLAIMER

Copyright by Urbis Pty Ltd. This drawing or parts thereof may not be reproduced for any purpose or used for another project without the consent of Urbis other than reproduction for the purposes of actual ordering, supply, installation or construction. This drawing must be read in conjunction with all relevant contracts, schedules, specifications, drawings and any other issued written instructions. Do not scale from drawings. Written figured dimensions take preference to scaled dimension and must be verified on site before proceeding with any work. All discrepancies must be referred to the superintendent for a written decision prior to ordering, supply or installation. Urbis must be notified in writing of any discrepancies.

CLIENT

OAKHILL COLLEGE

----

.

DRAWING TITLE

LEGEND & PLANT SCHEDULE

.

ISSUE

DESIGN DEVELOPMENT

SCALE

SET DRAWING SCALE

DRAWING NO.

L001

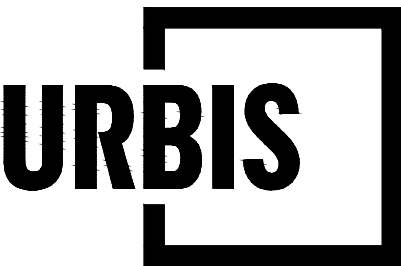
PROJECT NO.

P0020196

NORTH

REVISION

C



PROJECT

OAKHILL COLLEGE  
INNOVATION HUB AND HILLTOP PRECINCT  
423/513 OLD NORTHERN RD, CASTLE HILL NSW 2154

Angel Place, Level 8, 123 Pitt Street | Sydney NSW 2000 Australia | +61 2 8233 9900 | URBIS Pty Ltd | ABN 50 105 256 228

KEY PLAN

REV	DESCRIPTION	DWN	CHK	DATE	PROJECT DIRECTOR: MK
C	FOR TENDER	YV	CR	25.03.2021	
B	FINAL DRAFT ISSUE	YV	CR	26.02.2021	
A	50% DRAFT ISSUE	YV	CR	18.02.2021	



IT IS THE CONTRACTORS' RESPONSIBILITY TO  
PRINT DRAWINGS IN COLOUR TO AVOID ANY  
POTENTIAL DISCREPANCIES IF DRAWINGS  
ARE PRINTED IN BLACK AND WHITE